

# Fire Safety Message



NY FIRE  
SAFETY INSTITUTE

NY FIRE  
CONSULTANTS, INC.



[www.nyfiresafe.com](http://www.nyfiresafe.com)

212-239-9051

[www.nyfsi.com](http://www.nyfsi.com)

January 2019

## SPACE HEATERS

The use of **kerosene or propane** space heaters is strictly prohibited and illegal in New York City. The use of these types of space heaters poses a high risk of death and injury



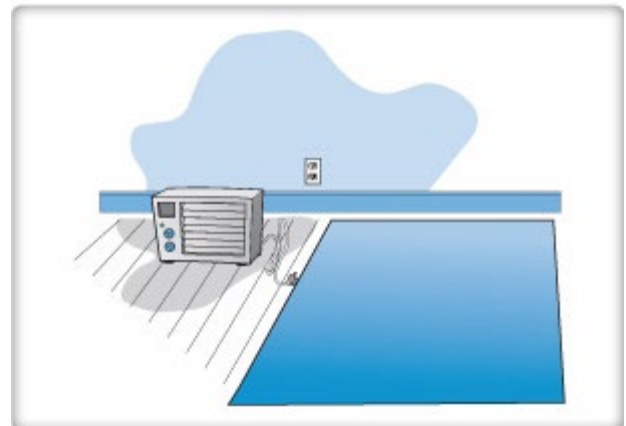
Kerosene Heater

### ELECTRIC SPACE HEATERS

When purchasing an electric space heater, look for heaters with automatic shut-off features. Never use the kitchen oven or gas range to heat your home or apartment. Such improper use could cause dangerous levels of carbon monoxide to accumulate, causing severe illness and possible death.



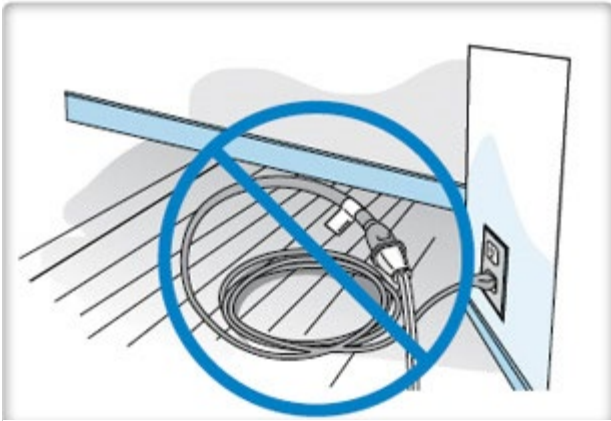
Read the manufacturer's instructions and warning labels before using your portable electric heater.



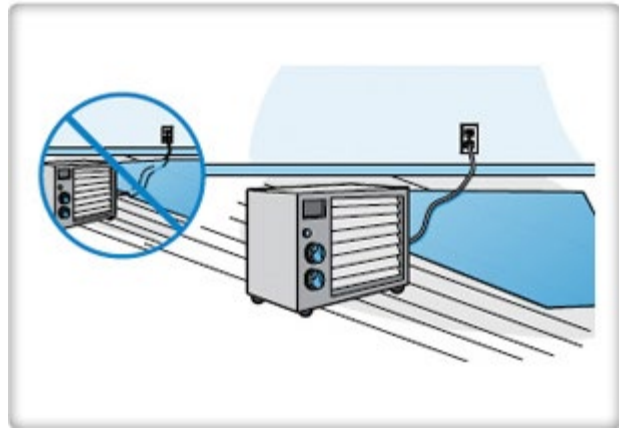
**DO NOT** leave operating heater unattended and always unplug heater when not in use

## New Classes Added

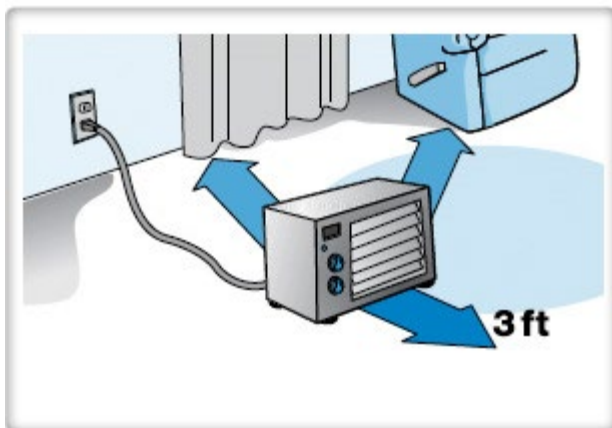
Sprinkler/Standpipe Certificate of Fitness Preparation January 16<sup>th</sup> @ 8:30 am  
Coordinator of Fire Safety & Alarm Systems, January 28<sup>th</sup> @ 8:30 am  
Construction Site Fire Safety Manager, F-56 February 11<sup>th</sup> and 13<sup>th</sup> @ 4:30 pm



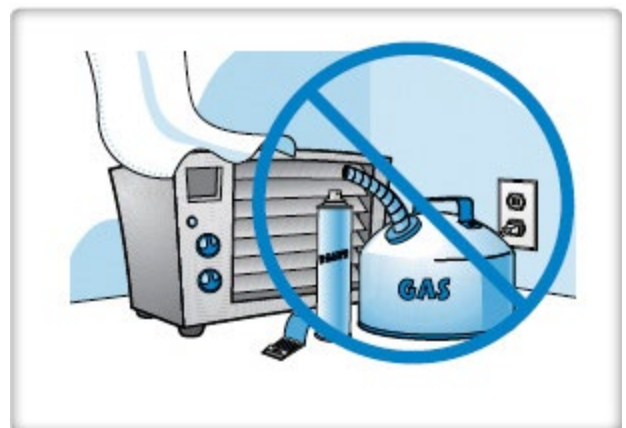
**DO NOT** use your heater with a power strip or extension cord. Overheating of a power strip or extension cord could result in a fire.



String out cords on top of area rugs or carpeting. Placing anything, including furniture, on top of the cord may damage it.



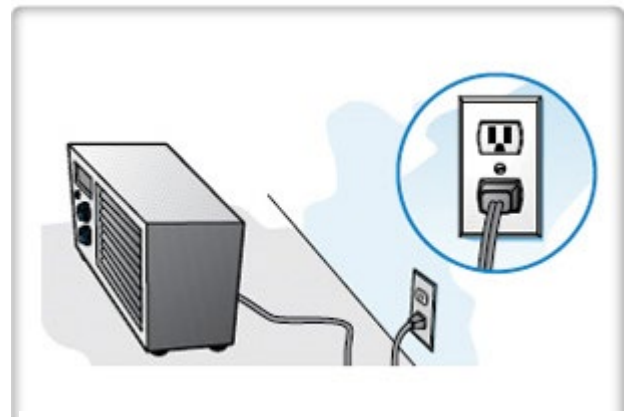
Keep flammable materials away from the heater.



Keep combustible materials, such as furniture, pillows, bedding, papers, clothes and curtains at least three feet from the front of the heater and away from the sides and rear. **DO NOT** block heater's air intake or exhaust source.



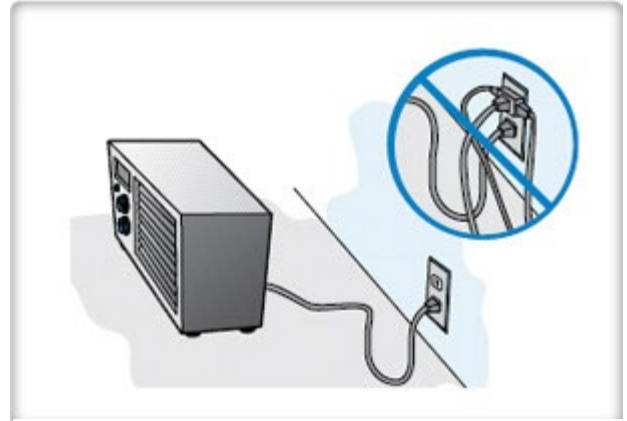
Unless the heater is designed for outdoor use or in bathrooms, **DO NOT** use in damp or wet areas. Parts in the heater may be damaged by moisture.



Check periodically for a secure plug/outlet fit. If the plug does not fit snugly into the outlet or if the plug becomes very hot, the outlet may need to be replaced. Check with a qualified electrician to replace the outlet.



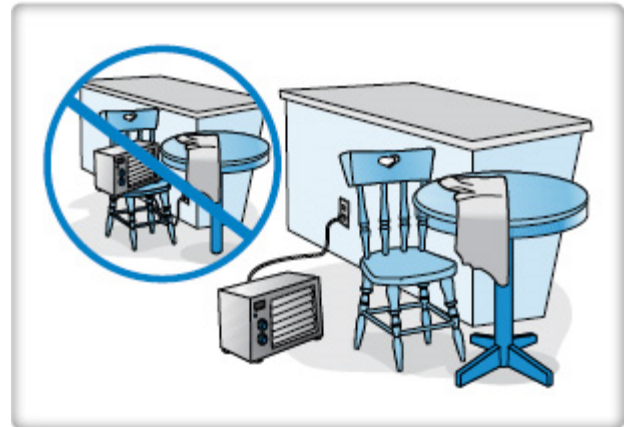
Unplug the heater when not in use by pulling the plug straight out from the outlet. Inspect the heater's cord periodically. **DO NOT** use a heater with a damaged cord.



**DO NOT** plug any other electrical device into the same outlet as your heater. This could result in overheating.



Heaters should be kept away from children and not be placed in a child's room without supervision.



Place heater on a level, flat surface. Only use heater on table tops when specified by the manufacturer. **DO NOT** place your heater on furniture. It could fall, dislodging or breaking parts in the heater.

